

Island Astronomy Institute

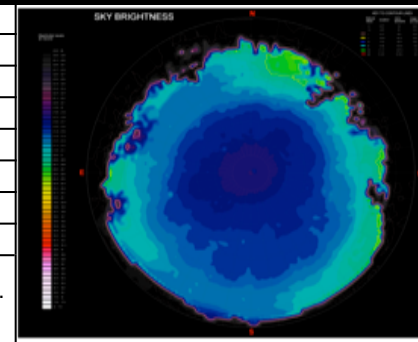
Night Sky Quality Monitoring Report



Report date: by: P Lord

Made Possible In Part by the Quimby Family Foundation & The National Park Service Challenge Cost Share Program

PARK:	Acadia	EQUIPMENT:	SBIG, 50mm f/2, 7706B	
SITE NAME:	Eagle Lake	OBSERVERS:	Peter Lord	
LONGITUDE:	-68.24972222	AIR TEMP (°F):	32	
LATITUDE:	44.37638889	REL HUMID (%):	62	
ELEVATION (m):	30	WIND SP (mph):	3 w/gusts to 6	
DATE (UT):	March 11, 2010	CCD TEMP (°C):	-20	
TIME START (UT):	4:11:30	EXP (seconds):	14	
DATA QUALITY:	Good	BORTLE CLASS:		ZLM:



Preliminary Summary Research Results To Be Used For Programmatic Evaluation Purposes Only. Copyright 2011, Island Astronomy Institute. This work may be freely reproduced and distributed for non commercial purposes.

SKY BRIGHTNESS DATA

1st SET LIGHT DOME DATA

Data Set	Time (UT)	Extinction coefficient (mag/air-mass)	Std Err Y Extinction Regression (mags)	Zenith (% L.P. mag/sq arc-sec)	Whole Sky (% LP mags)	Sky Above: 20° Altitude (%LP mags)	Brightest (% L.P. mag/sq arc-sec)	Darkest (mag/sq arc-sec)	Index Synthetic SQM	City	Distance (km)	Azimuth	Brightness (mLUX)
1st	Start 4:11:30	0.267	0.041	21.61	-7.00	-6.69	20.31	21.83	63.7				
	End 4:31:33								21.51				
2nd	Start 5:15:22	0.374	0.132	21.49	-7.01	-6.72	20.33	21.74	55.2				
	End 5:35:26								21.47				
3rd	Start 6:19:15	0.640	0.189	21.56	-7.11	-6.84		21.69	41.1				
	End 6:39:18								21.36				
4th													
5th													
6th										Total Light Pollution (mLUX)			
7th										Experimental Astronomical V-Band Scale			
8th										Natural Visual Quality (100 = All Natural)		72.2	

This work was supported by the National Park Service's (2008) Challenge Cost Share Program. Points of view are those of the author(s) and do not necessarily represent the position of the Department of the Interior.